



Massachusetts Department of Public Health

Advancing Health and Racial Equity

Melissa Charles, MPH

Division of Community Engagement (DCE)

Office of the Assistant Commissioner of Health Equity (OACHE)

June 4, 2025

Agenda

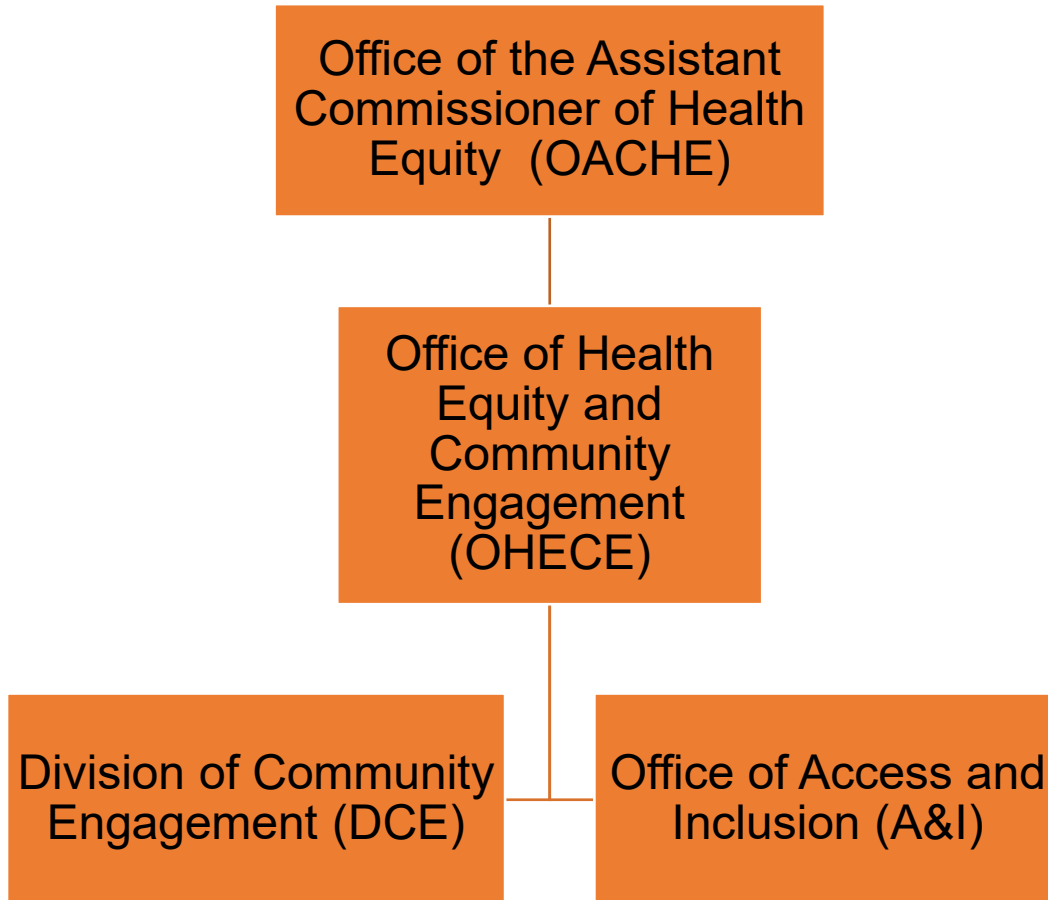
Overview: Office of the Assistant Commissioner for Health Equity (OACHE) and the Division of Community Engagement (DCE)

DPH's Strategic Plan to Advance Racial Equity (SP-ARE)

The Racial Equity Road Map

Why Equity in Emergency Response?

Overview of the Office of the Assistant Commissioner of Health Equity (OACHE)



Our mission:

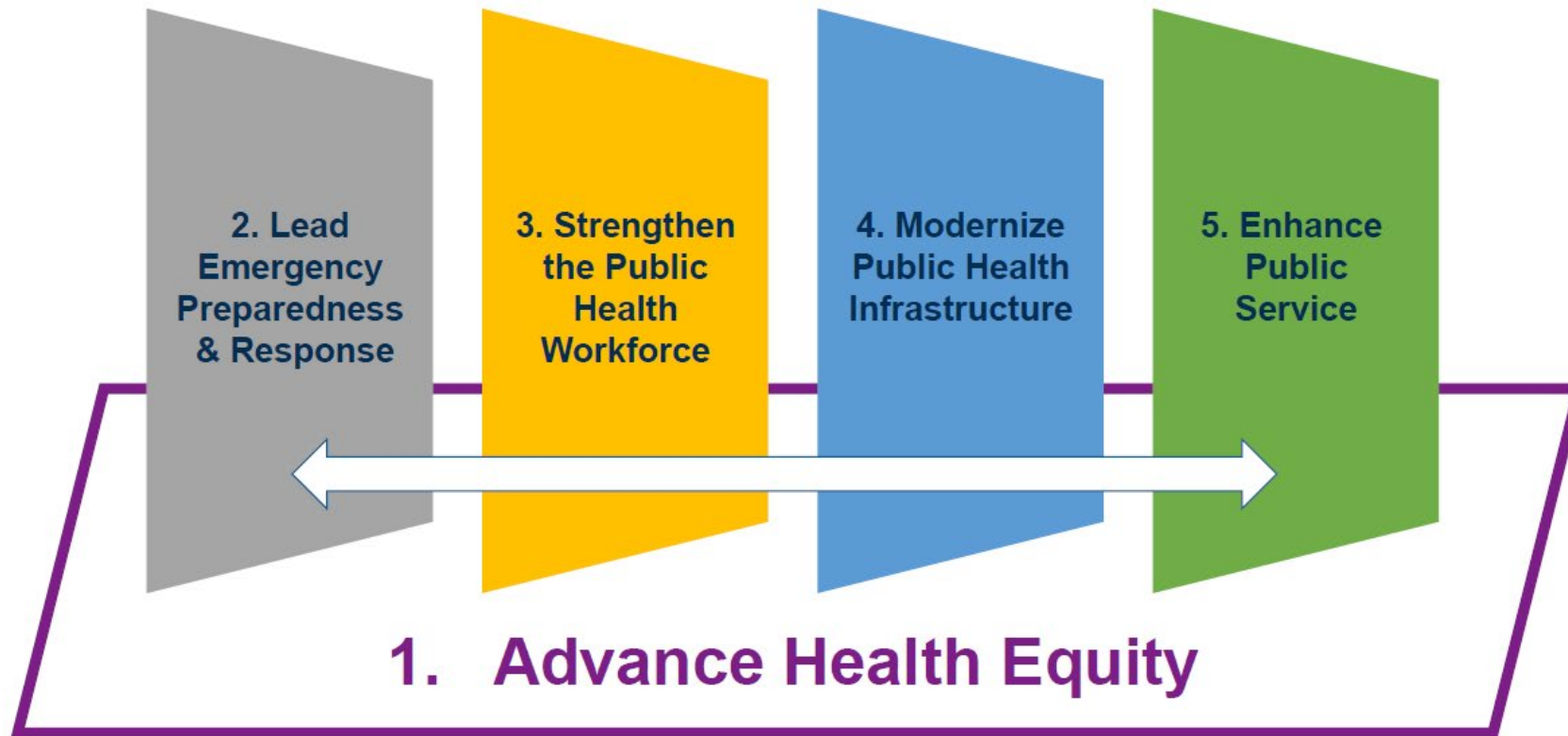
- Foster collaborative partnerships across the DPH, local governments, and communities
- To embed data-informed, equity-centered practices into DPH's program planning and service delivery
- Oversees DPH's Strategic Plan to Advance Racial Equity

About the Division of Community Engagement (DCE)

- DPH established the DCE in 2022 to grow and strengthen community relationships developed during the COVID-19 pandemic.
- Within the DCE, dedicated coordinators work with priority populations across the Commonwealth, including but not limited to Black, Latino, immigrant, LGBTQ+, and Tribal and Indigenous communities.
- The DCE is also taking a lead role in supporting other, recent DPH-wide initiatives, including: [Advancing Health Equity in Massachusetts \(AHM\)](#), a place-based initiative launched last year that is aimed at eliminating racial, economic, and regional disparities in health outcomes.
- The [Strategic Plan to Advance Racial Equity \(SP-ARE\)](#), which aims to advance racial equity in all the work DPH undertakes and oversees.

DPH's Strategic Plan to Advance Racial Equity

Five Foundational Public Health Strategies



DPH Health Equity Framework: Practices

Centering the experiences of Black, Indigenous, and people of color within each priority population.

Focus on priority populations

Understanding the ways racism and oppression operate within systems and structures.

Use a structural analysis

Acting on principles to advance racial equity in all work.

Lead with equity principles

The Racial Equity Roadmap

Racial equity means being aware of and taking into account past and current inequities, and providing all people, especially those who are most impacted by racism, the support needed to thrive.



For more information, contact: RESPIT@mass.gov

Why Equity in Emergency Response?



Marginalized communities are disproportionately impacted

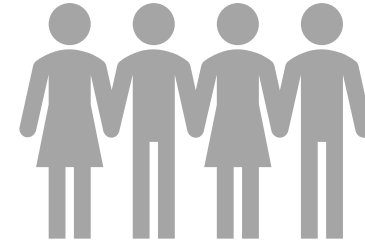


Practices centered in equity and community engagement are crucial to be able to reach every person in every community

Looking Forward



Cross-Bureau Collaborations



Community Collaborations

Resources

The Strategic Plan to Advance Racial Equity:

mass.gov/doc/2024-strategic-plan-to-advance-racial-equity/download

Racial Equity Data Road Map:

mass.gov/racial-equity-data-road-map

Connect with DPH



@MassDPH



Massachusetts Department of Public Health



mass.gov/dph